

An aerial night view of a city skyline, likely New York City, with numerous skyscrapers illuminated. Overlaid on the image are several bright yellow light trails that form arcs and lines across the scene, suggesting movement or connectivity. In the center, a yellow rectangular box contains the logo for SEI SCHÄFER. The logo consists of the letters 'SEI' in a stylized red font followed by 'SCHÄFER' in a bold black font.

**SEI SCHÄFER**

*Think Tomorrow.*



# TECHNOLOGICKÁ KONFERENCE

AUTOMATIZACE JAKO CESTA K ZAPOJENÍ DO  
MODERNÍHO DODAVATELSKÉHO ŘETĚZCE

20.3.2019



# CLOSE TO CUSTOMERS WORLDWIDE

With locations across six continents, SSI SCHAEFER provides innovative concepts and solutions for our customers and combines both global and local strengths.

- 8 production sites
- Over 70 subsidiaries
- More than 10,500 associates



# WIDE RANGE OF SOLUTIONS

SSI SCHAEFER plans, designs and produces **modular storage and logistics systems** as well as solutions for **Waste Technology & Recycling**. We implement **customized general solutions** which include **Customer Service & Support** and, as one of the biggest suppliers, we offer **releasable software solutions**.



STORAGE



CONVEYING



PICKING



HANDLING



IT SOLUTIONS



GENERAL CONTRACTOR



CUSTOMER SERVICE &  
SUPPORT



WASTE MANAGEMENT &  
RECYCLING





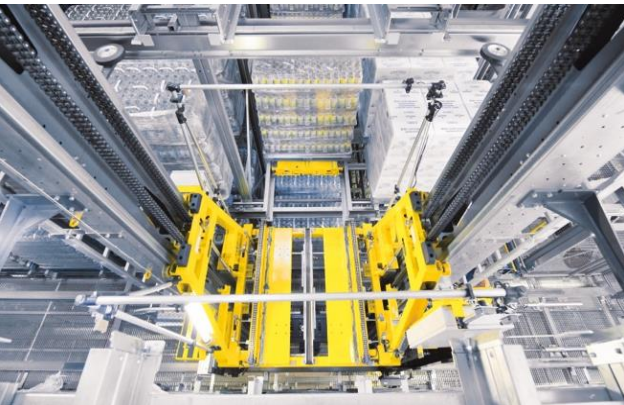
# STORAGE



# FLEXIBLE STORAGE

The **intelligent logistics modules** from SSI Schaefer are based on a comprehensive portfolio of standard products and solutions that ensure optimum **integration** and **scalability** thanks to their **modular design**.

- Pallet racking
- Channel storage systems
- High-bay warehouses
- Storage and retrieval machines and shuttle systems for pallets
- Bin systems
- Bespoke packaging
- Storage and retrieval machines and shuttle systems for bins, cartons and trays
- Miniload systems
- Mobile racking systems
- Elevated racking and storage platforms





# FLEXIBLE STORAGE

The success story of SSI SCHAEFER started with **containers**. For over 80 years, a high level of competence has developed from which our customers benefit globally. First-class materials, premium quality and innovative solutions drive our success – and we accomplish this every day at our production facilities in Germany and the USA.

Our portfolio includes numerous **storage, order picking, and transport containers** for manual as well as semi- or fully automated storage:

- Stackable containers with Euro dimensions
- Open-front containers
- Shelving boxes
- Trays
- Folding containers
- Returnable containers
- VDA KLT Euro container
- Sheet metal containers
- Engineered packaging





# CONVEYING



# POWERFUL CONVEYING

SSI SCHAEFER's range of components and solutions is very diverse. Just like intralogistics processes themselves. The broad portfolio encompasses transporting and sorting, merging and diverting, buffering and storing as an optimal basis for **efficient material flow** and **maximum efficiency**.

## Advantages:

- High efficiency and flexibility
- Complete solutions from a single source
- A broad spectrum of solutions for almost all load carriers
- Long-term productivity through high-quality and reliable components





# POWERFUL CONVEYING

As a **single source provider** with its **own production**, SSI SCHAEFER delivers everything from the load carrier and the control system to the software solution and the conveying system.

- Pallet conveying system
- Roll container conveying system
- Plastic belt conveying system
- Tray conveying system
- Case conveying system
- Overhead conveying system
- Bin and carton conveying system
- Automated guided vehicles (AGVs)







**PICKING**



# EFFICIENT PICKING

SSI SCHAEFER systems are available for, and **compatible** with, all common product groups and goods types. In addition, SSI SCHAEFER also provides the control and software for the systems.

## Manual picking

- Vertical lift module LOGIMAT®
- Pick by Light
- Pick by Voice
- RF picking

## Semi-automated picking

- Batch Pick'n Scan Sorter
- Parallel Picking System
- Pick to Tote
- Pick to Bucket

## Automated picking

- Fulfillment Factory
- A-Frame
- 3D-MATRIX Solution®
- Schäfer Case Picking





# HANDLING



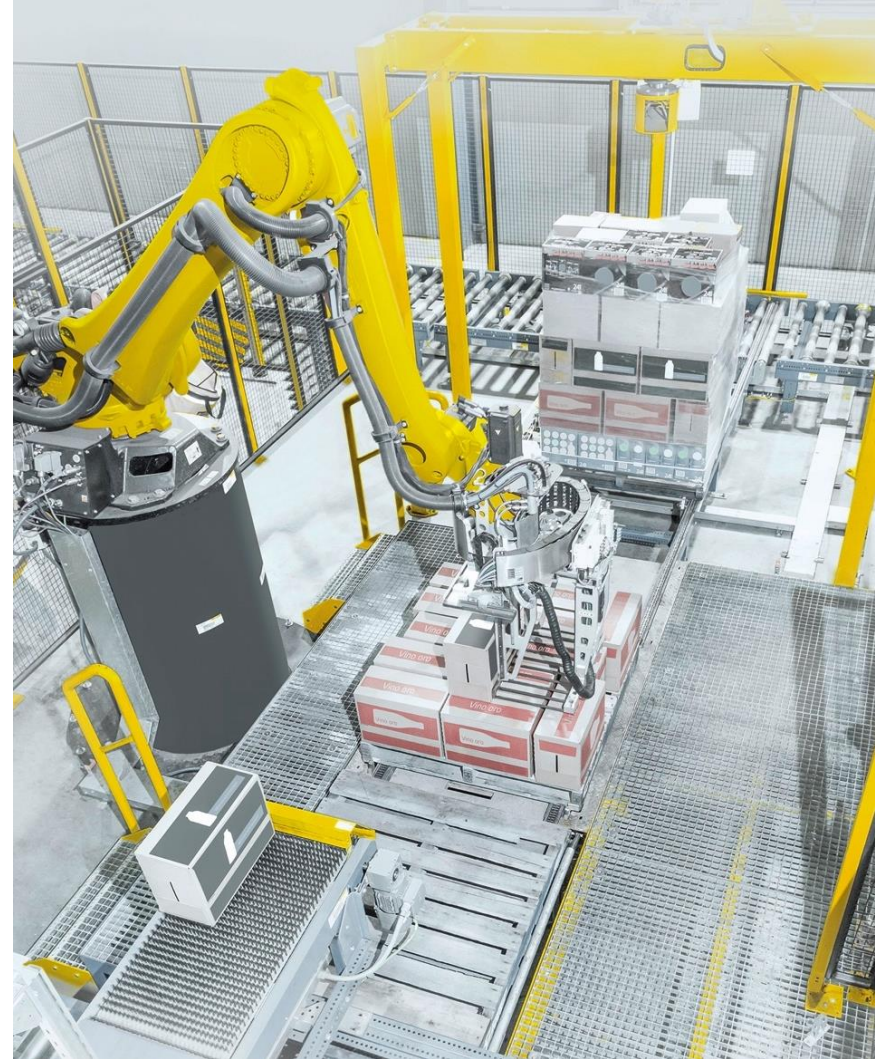


# RELIABLE HANDLING

**Efficient and reliable material flow** for maximum throughput from palletizing, depalletizing, labelling or error-free and transparent picking, SSI SCHAEFER has a suitable solution for all requirements and offers various handling systems.

## Advantages:

- High economy and extensive time savings
- Consistently excellent quality through automated processes
- Low-noise operation and demand-oriented use of energy
- Maximum flexibility due to modular expansion capability



# RELIABLE HANDLING

Handling systems from SSI SCHAEFER guarantee reliable **order processing** in the warehouse and **significantly enhance productivity**.

- Bin handling systems
- Paper handling systems
- Depalletizing
- Palletizing
- Schäfer Scan Machines





# HOW TO AUTOMATE

[ssi-schaefer.com](http://ssi-schaefer.com)

**SSI SCHAEFER**

# KEY ISSUES TODAY

No  
staff

Volume  
growth

Shortening  
leadtimes

No space  
in  
warehouse

...

Customer  
demands

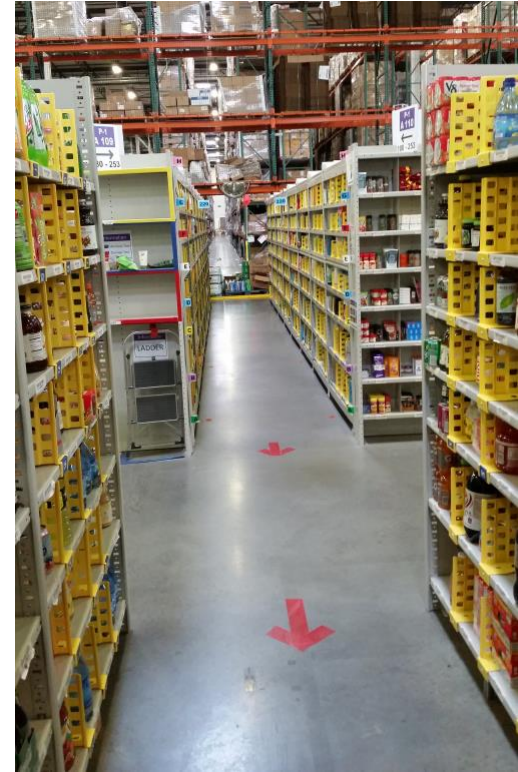


Product  
integrity

Increasing  
complexity



# CHALLENGES...



# SOLUTIONS...



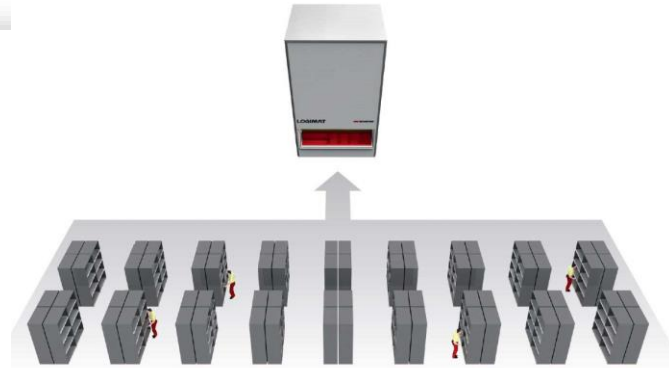
- Time to market > + 24 months
- Capital intensive
- Pressure on customer team
- Change management
- New processes



**...OR START SLOW AND EXTEND...**



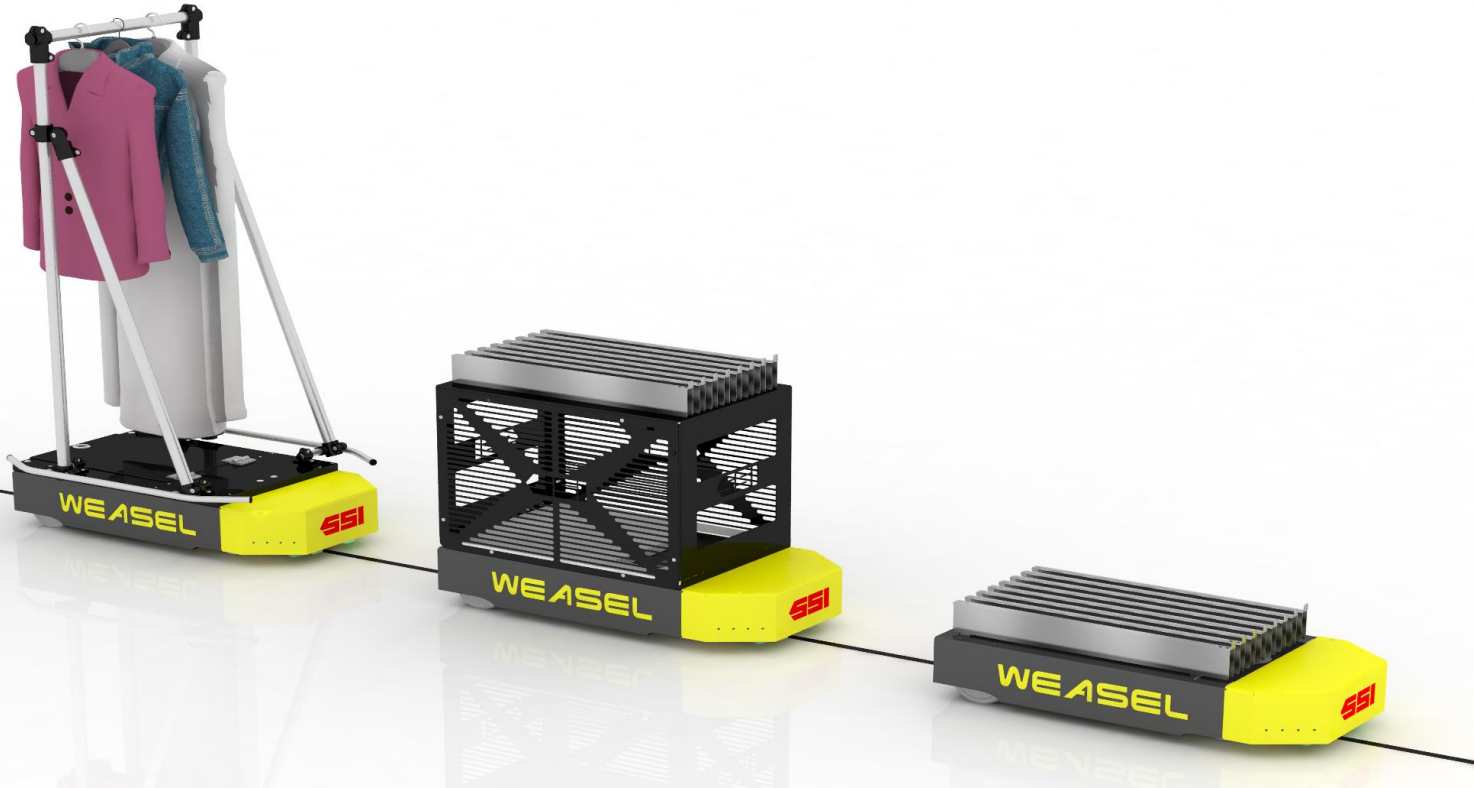
# VERTICAL STORAGE TOWER



- Space saver
- Quick delivery times - quick wins
- Semi-automatic solution
- Modest one time investment
- Short payback period
- Low demands on customer

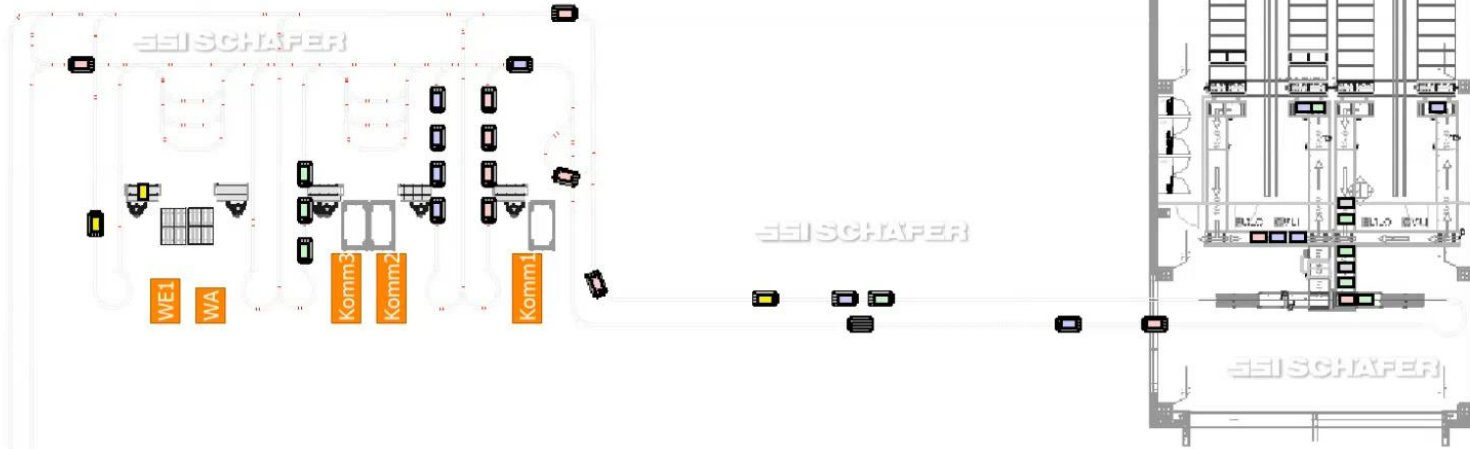


# AGV TECHNOLOGY WEASEL



**WEASEL**®

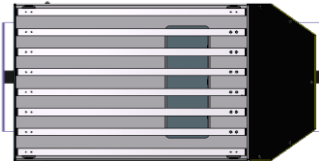
## SIMULATION







- Fast worker – 1m / sec
- Short delivery time – 8 weeks
- Semi-automatic or fully automatic solution
- Easy to change layout by customer
- Low investment
- Short payback period



# RECOMMENDATIONS

- Understand your processes, identify weaknesses & TRUE needs
- Consult professionals
- Talk to others, visit reference sites
- Be prepared to invest time & resources in to the process
- Start small & extend...
- Support your organization with Change management



It can lead to this:

**Budějovický  
Budvár**  
NÁRODNÍ PODNIK



 **MARLENKA®**



Thank you

